



**Cripple Street, Maidstone, ME15 6DW**  
**Price £270,000**





**++A GRAND FIRST FLOOR APARTMENT IN A GRADE II LISTED MANOR HOUSE++**

Living at The Manor is a unique experience that begins with the approach along its private drive. Passing through the classic portico, you enter a partly panelled hall which leads to the magnificent staircase – a fitting introduction to this elegant period home.

The apartment itself retains the same refined character, with exposed timbers and a striking panelled Drawing Room. There is a well-fitted kitchen and a luxury bathroom. At present, the property is arranged as one bedroom with the second bedroom used as a study/dressing room, offering flexibility to suit your lifestyle.

Residents enjoy access to the extensive communal gardens without the responsibility of upkeep, together with the charming thatched-roof Summer House. Parking is available in the front gardens of The Manor, and the property also benefits from a single garage in a nearby block. The leaseholders benefit from an adjoining 30 acre conservation area which is accessed via a padlocked gate.

The Manor is set in the heart of Loose, one of Maidstone's most sought-after villages. Known for its conservation area and picturesque countryside walks through the Loose Valley, the village also offers a selection of local shops, pubs and a primary school. Maidstone town centre is only a short drive away, providing comprehensive shopping, schooling and transport links, including mainline rail services to London from Maidstone East, West and Staplehurst stations.



**Entrance Hall**

**Entrance Lobby**

**FIRST FLOOR**

**Lounge 24'0" x 21'4" (7.34m x 6.51m)**

**Kitchen 20'5" x 7'3" (6.24m x 2.23m)**

**Bedroom 16'8" x 11'4" (5.09m x 3.46m)**

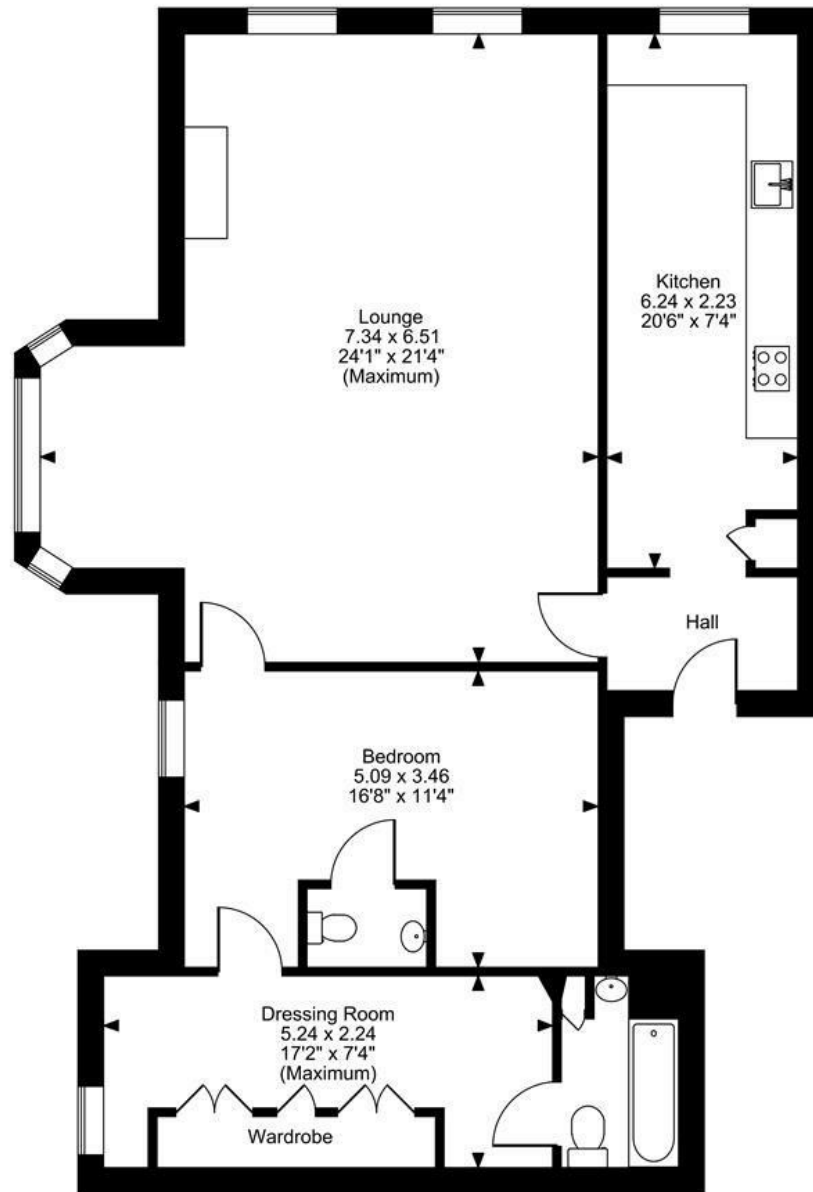
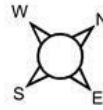
**Dressing Room 17'2" x 7'4" (5.24m x 2.24m)**

**Bathroom**

**EPC Exempt**



The Manor, Hayle Place, Cripple Street, Maidstone, Kent  
Approximate Gross Internal Area  
969 Sq Ft/90 Sq M



First Floor

FOR ILLUSTRATIVE PURPOSES ONLY - NOT TO SCALE

The position & size of doors, windows, appliances and other features are approximate only.

© ehouse. Unauthorised reproduction prohibited. Drawing ref. dig/8663236/TOW

